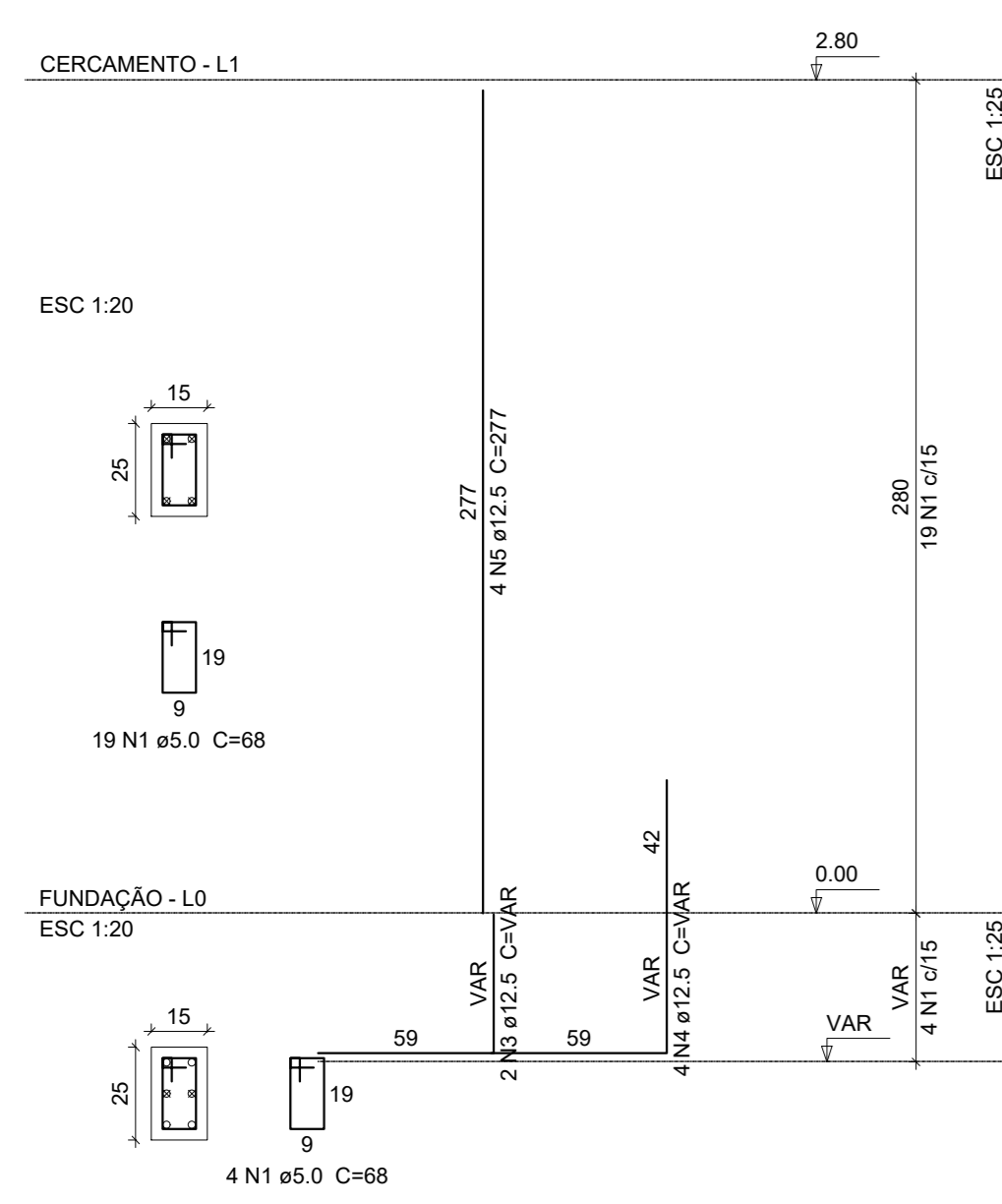
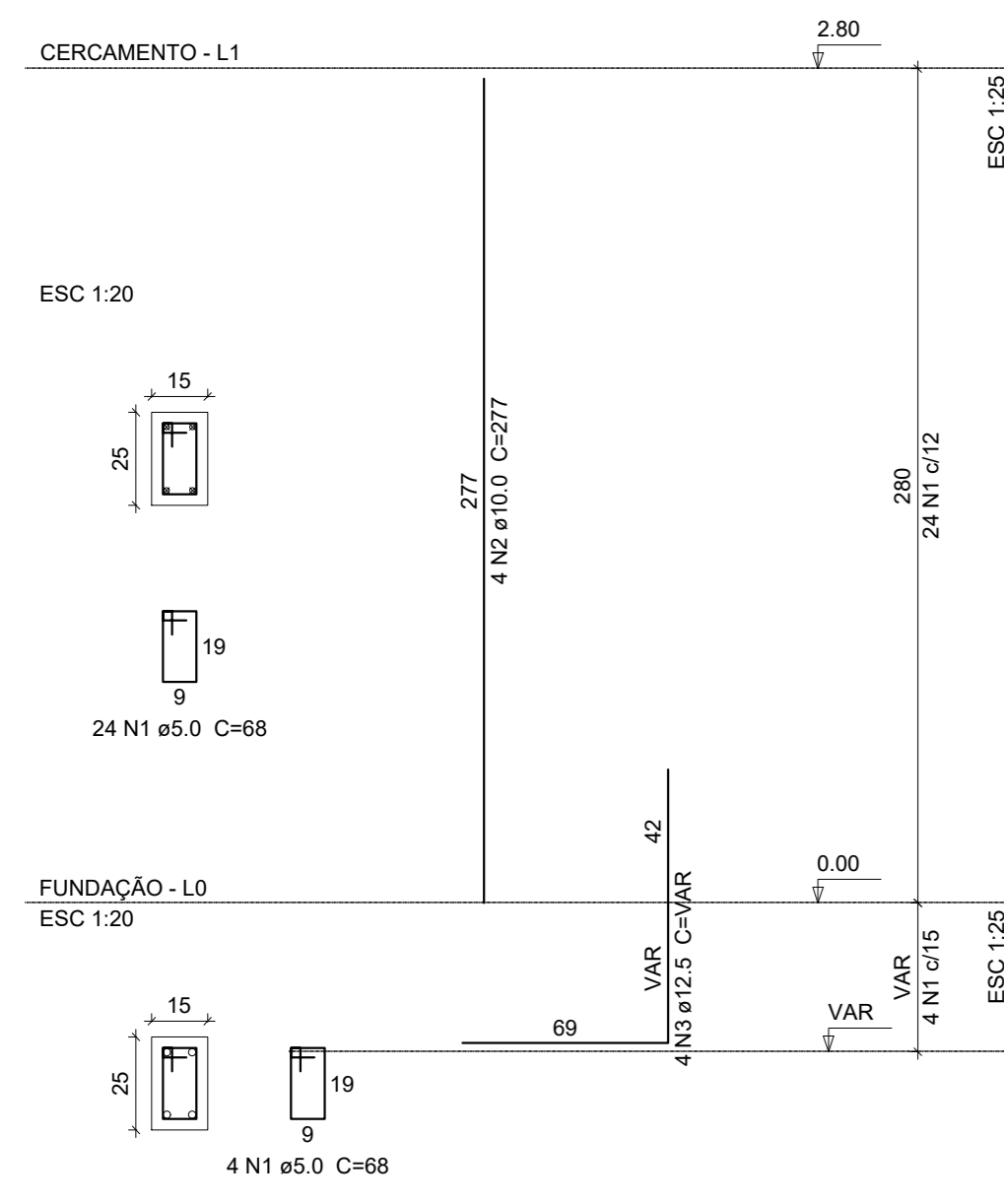


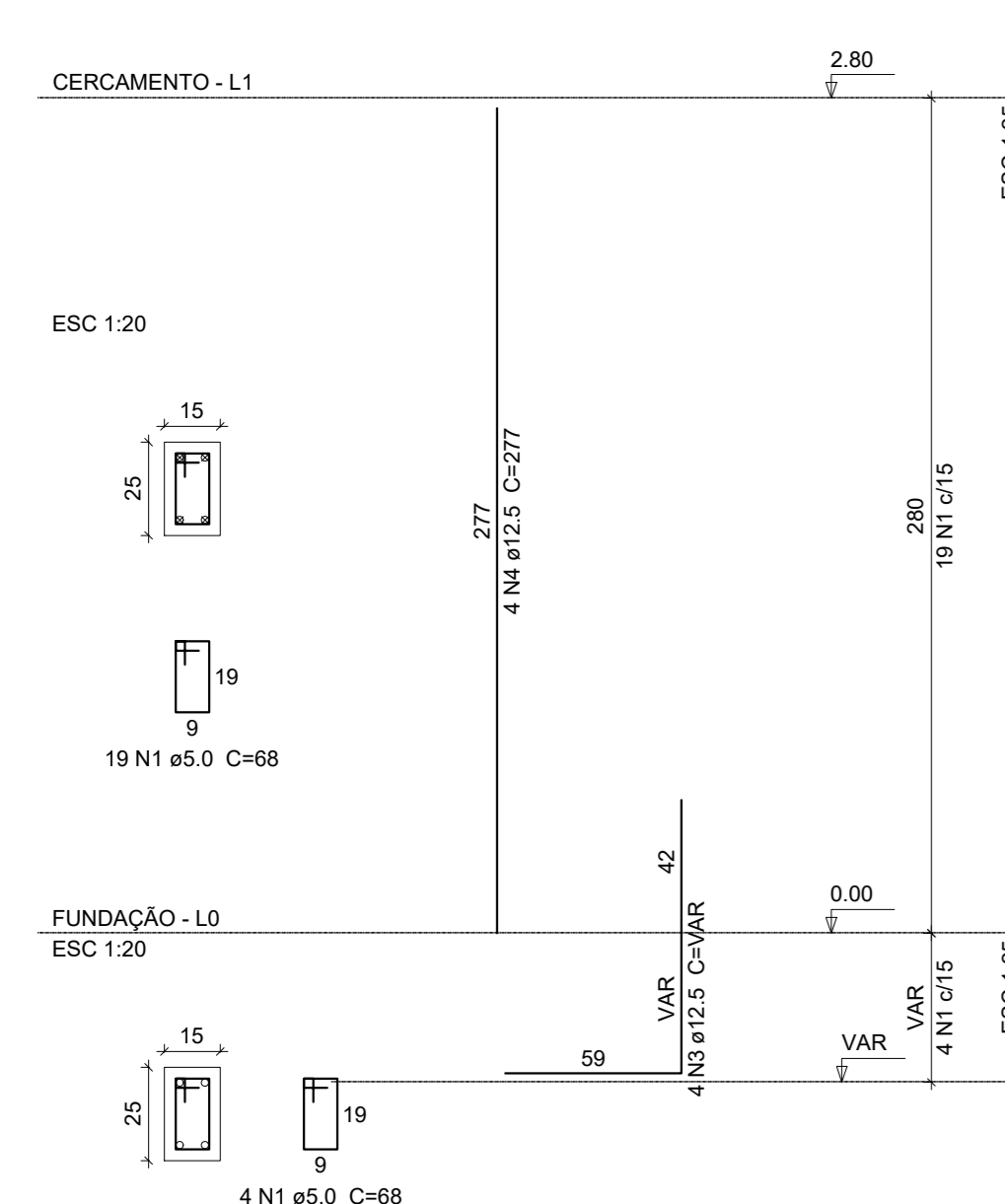
P1



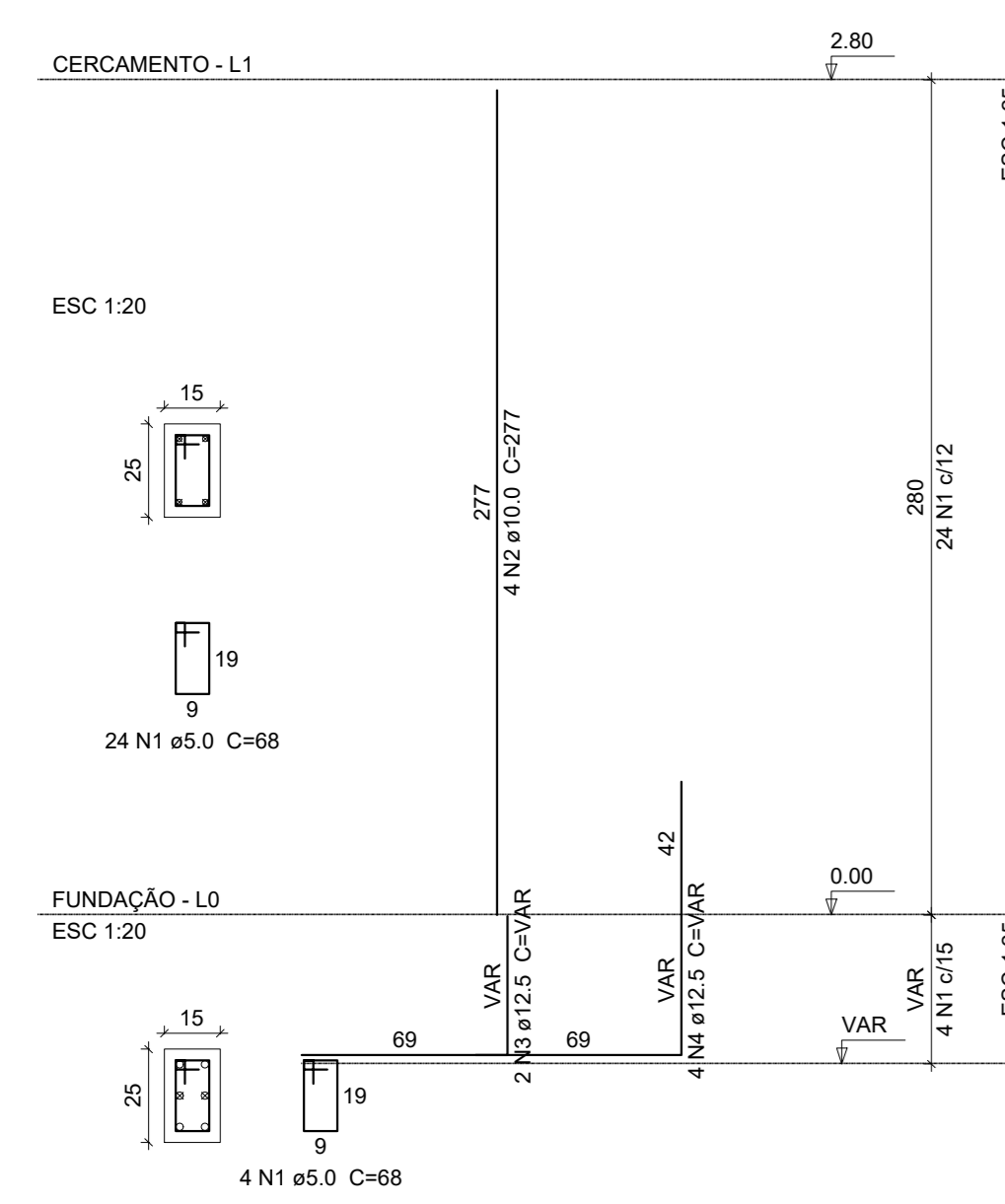
P5



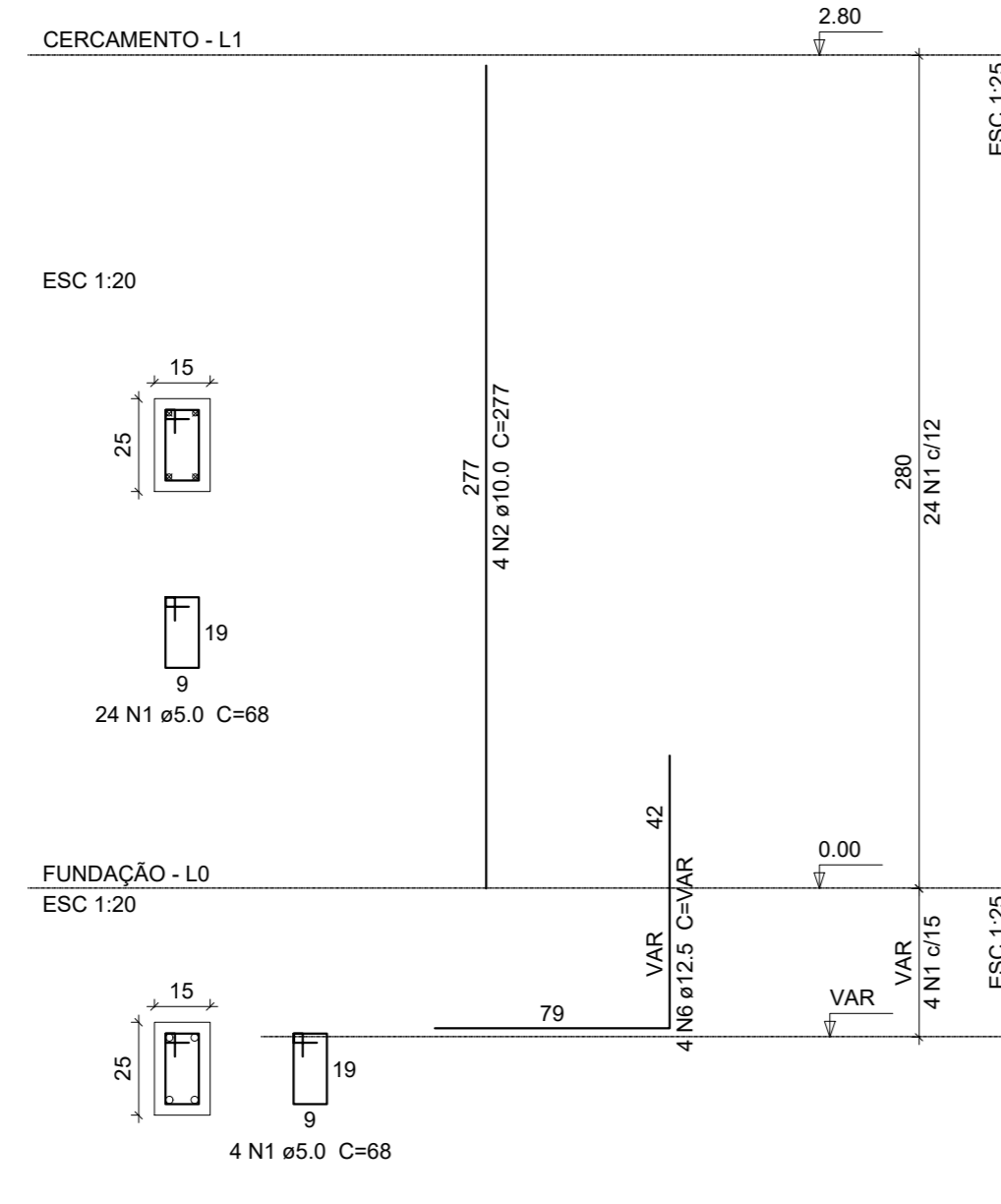
P9



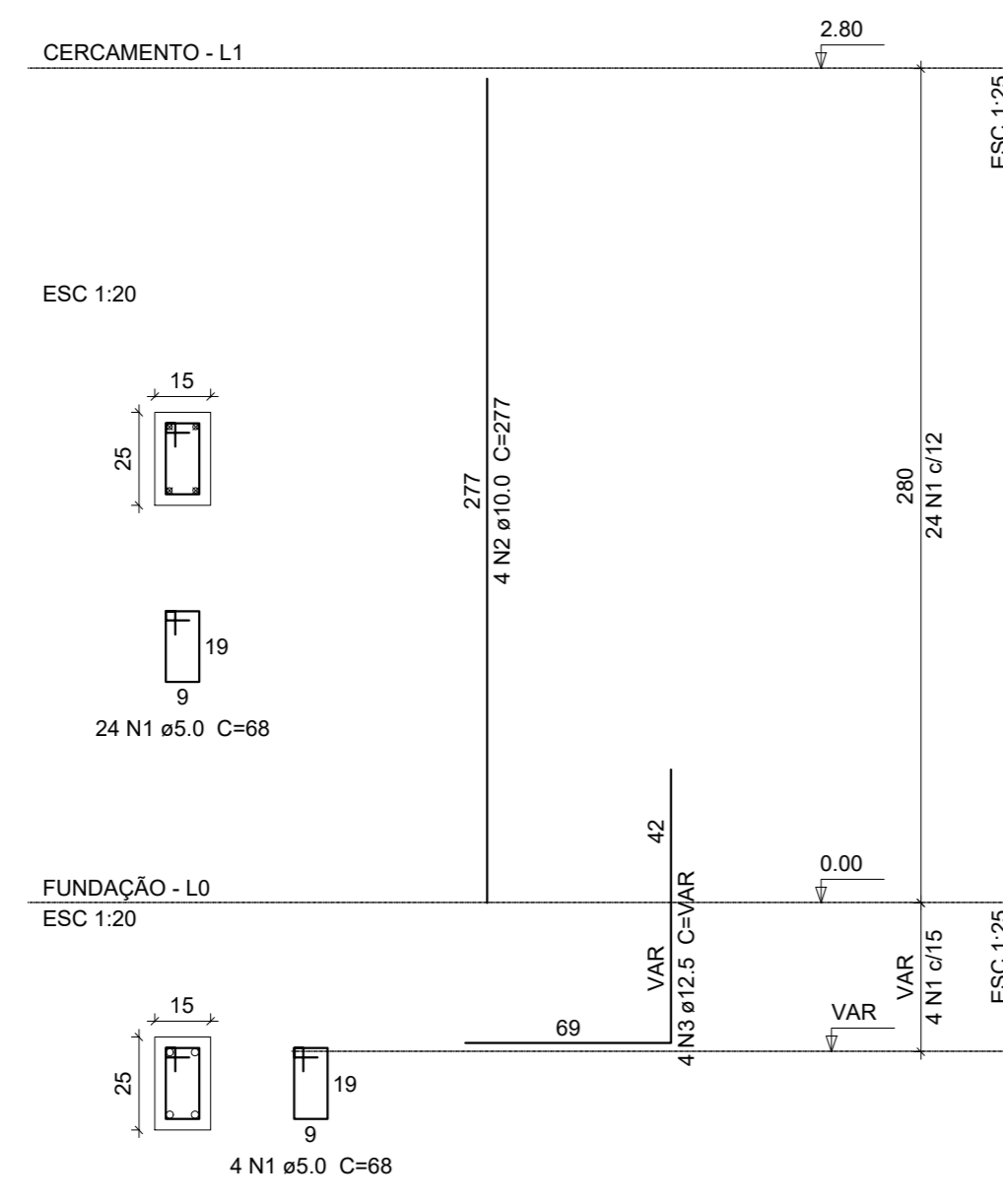
P13



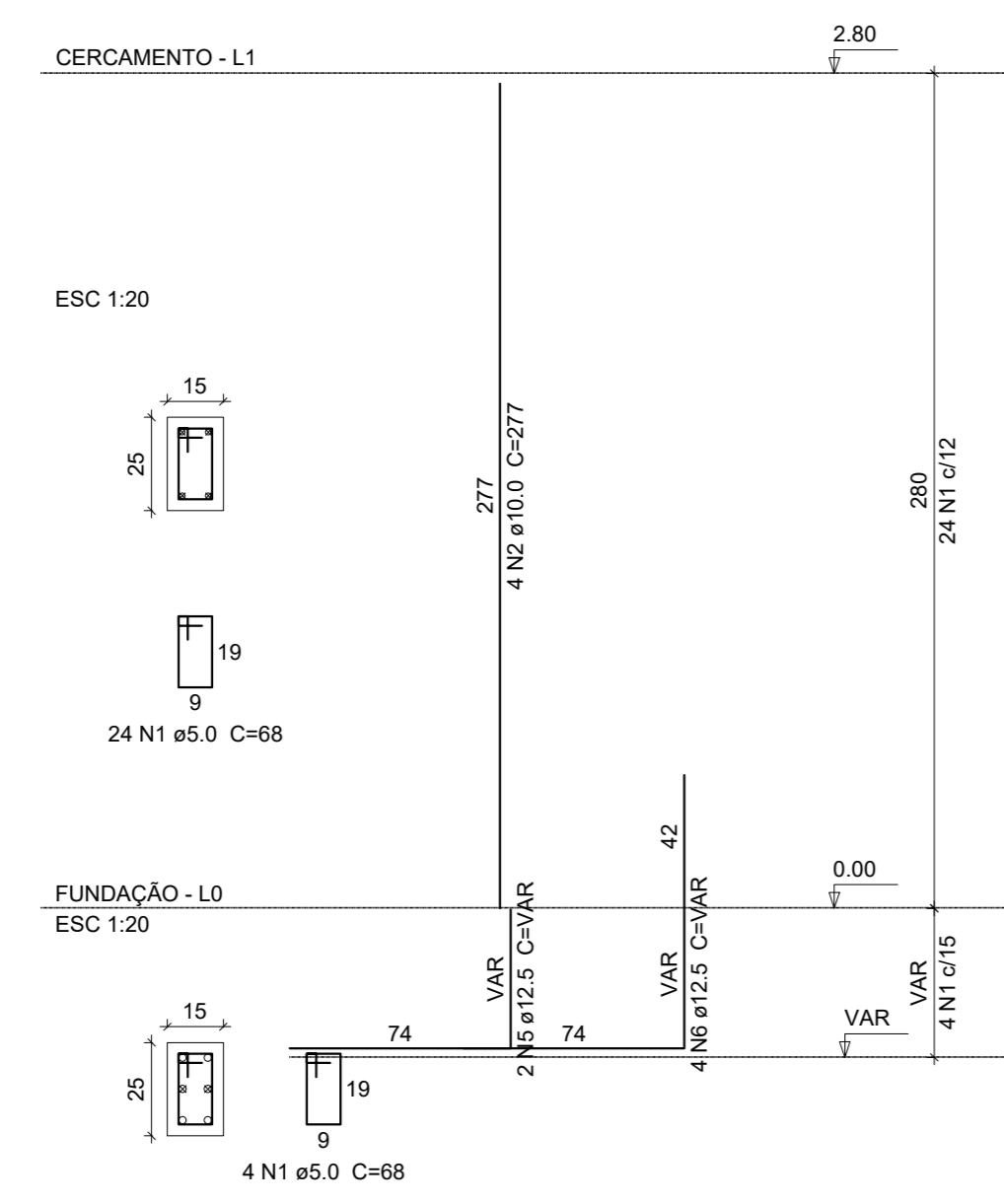
P2



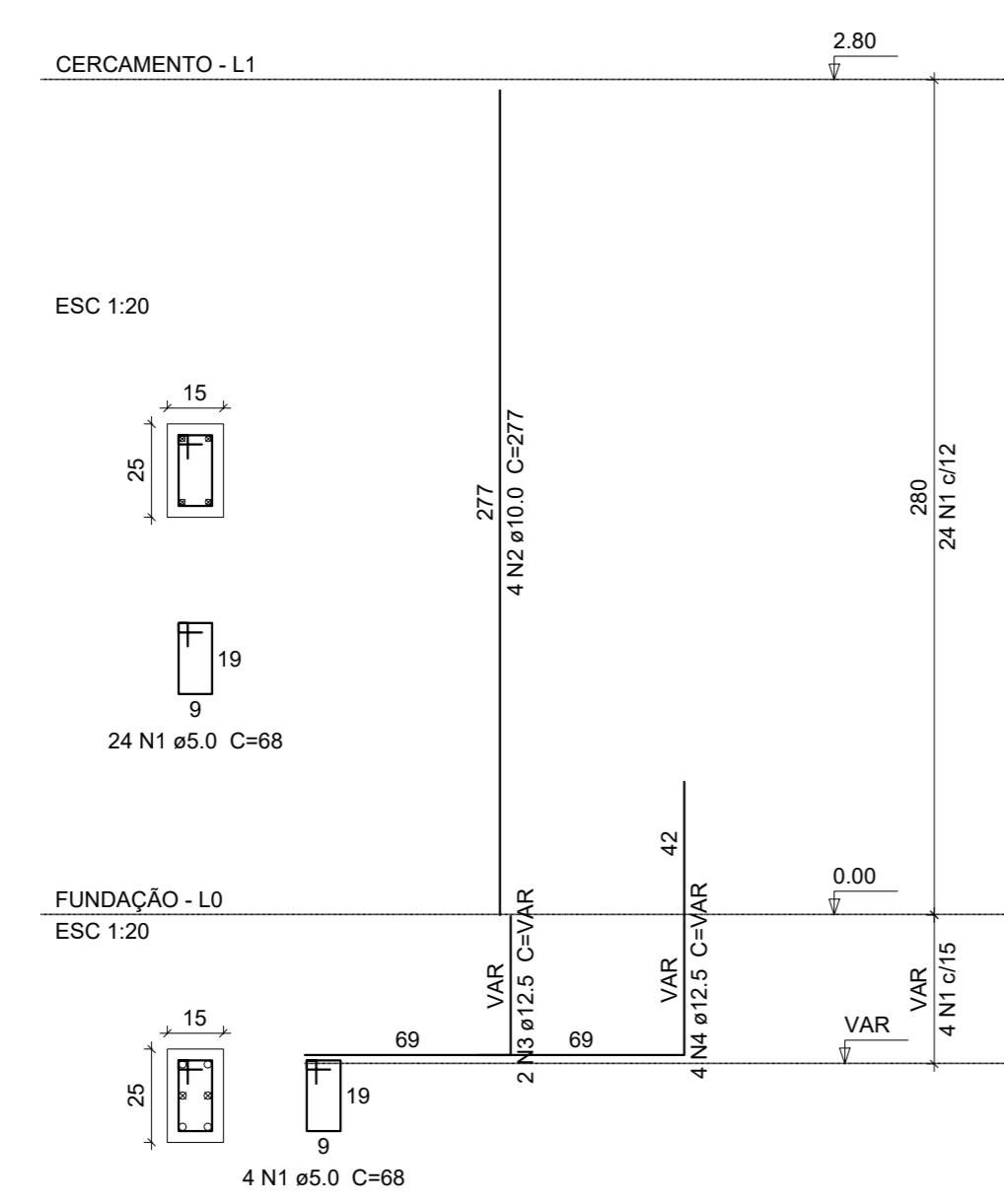
P6



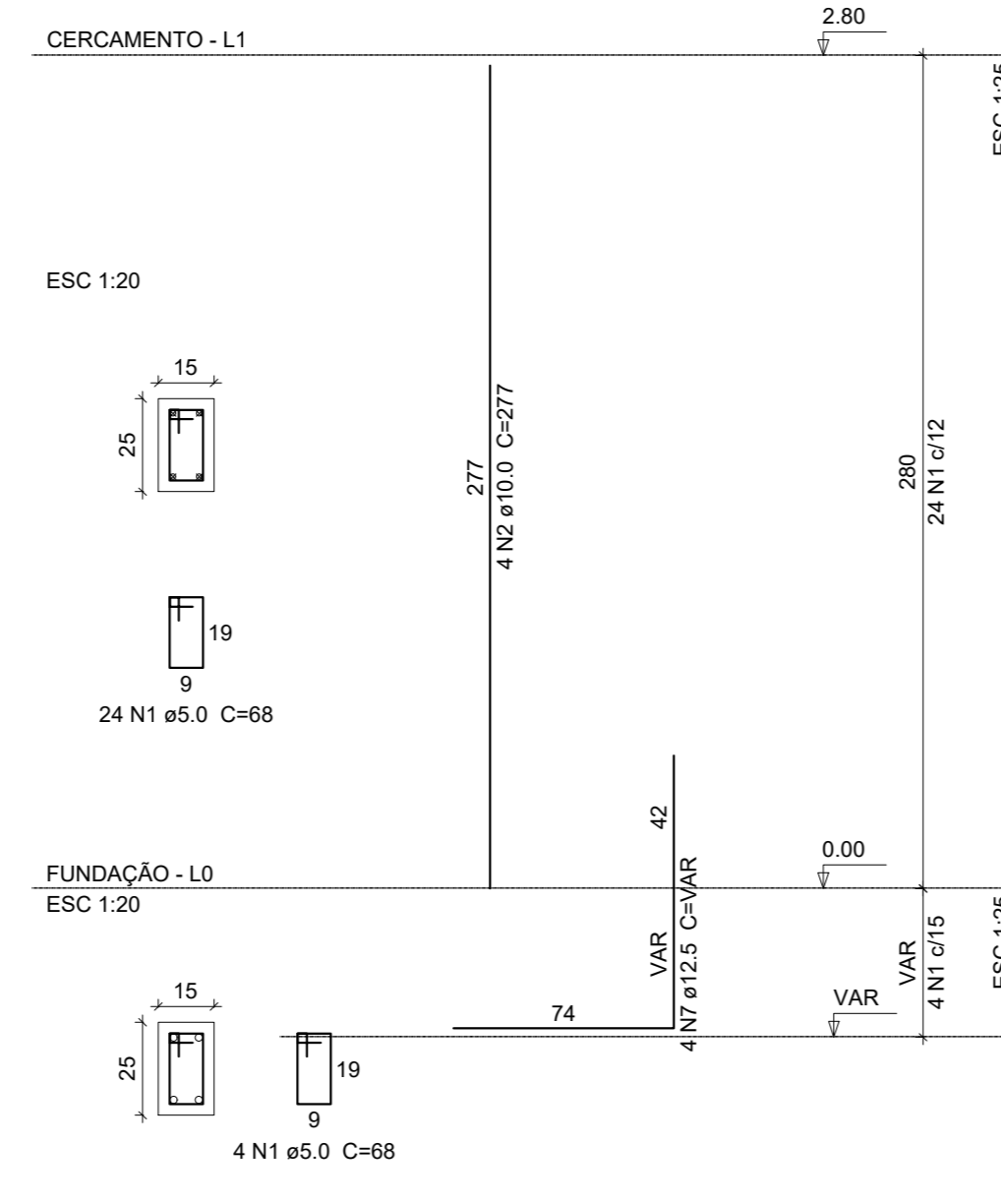
P10



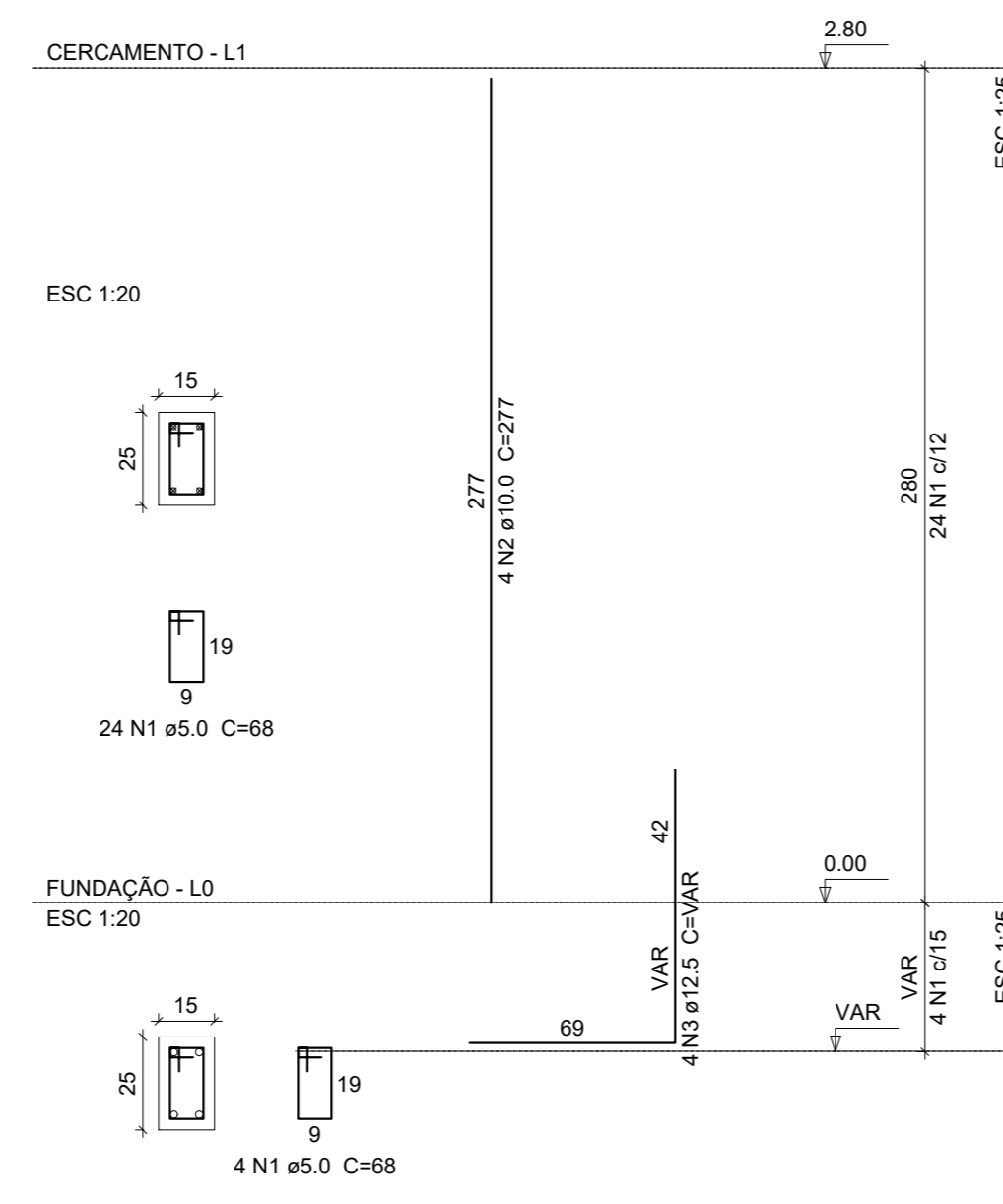
P14



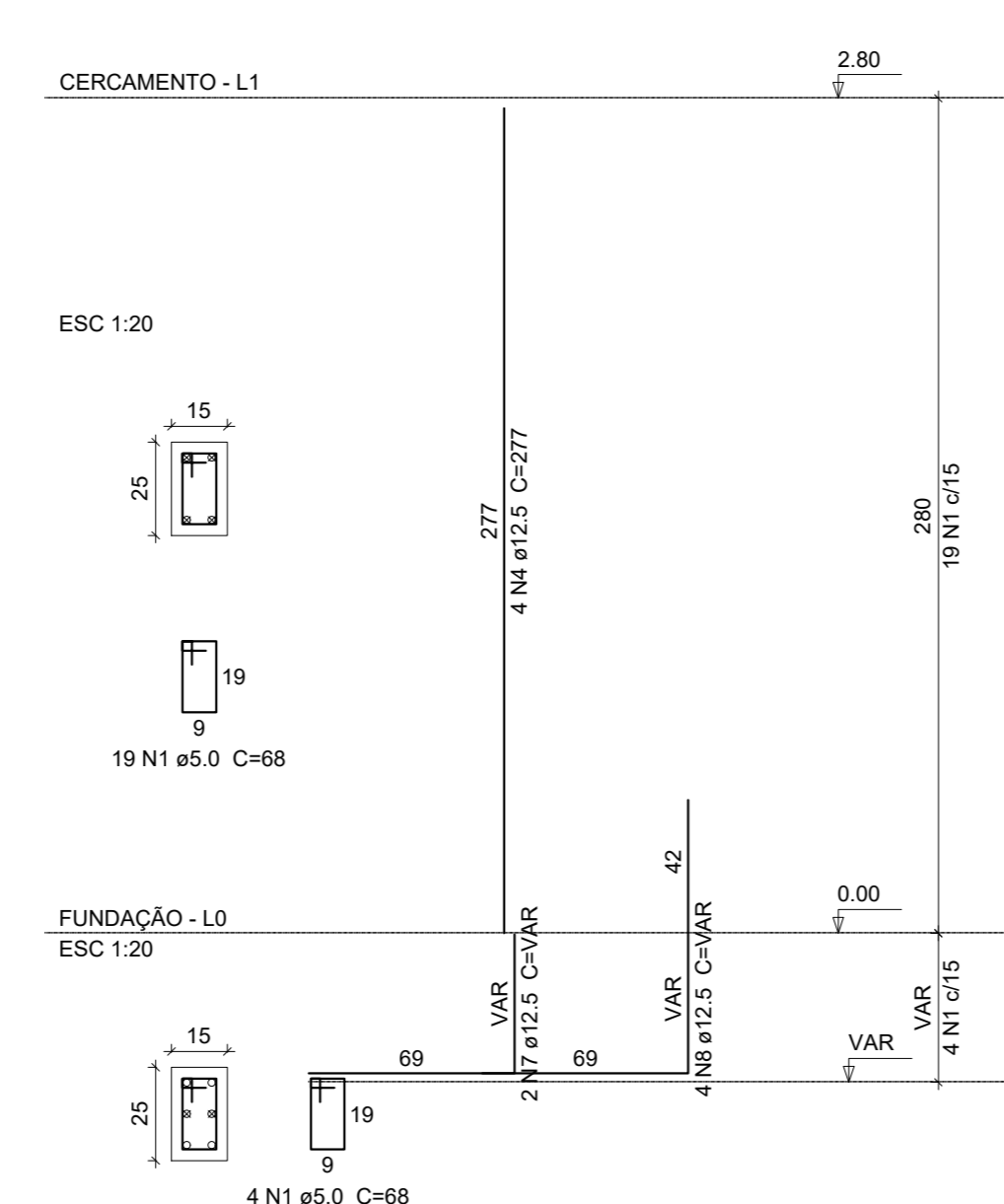
P3



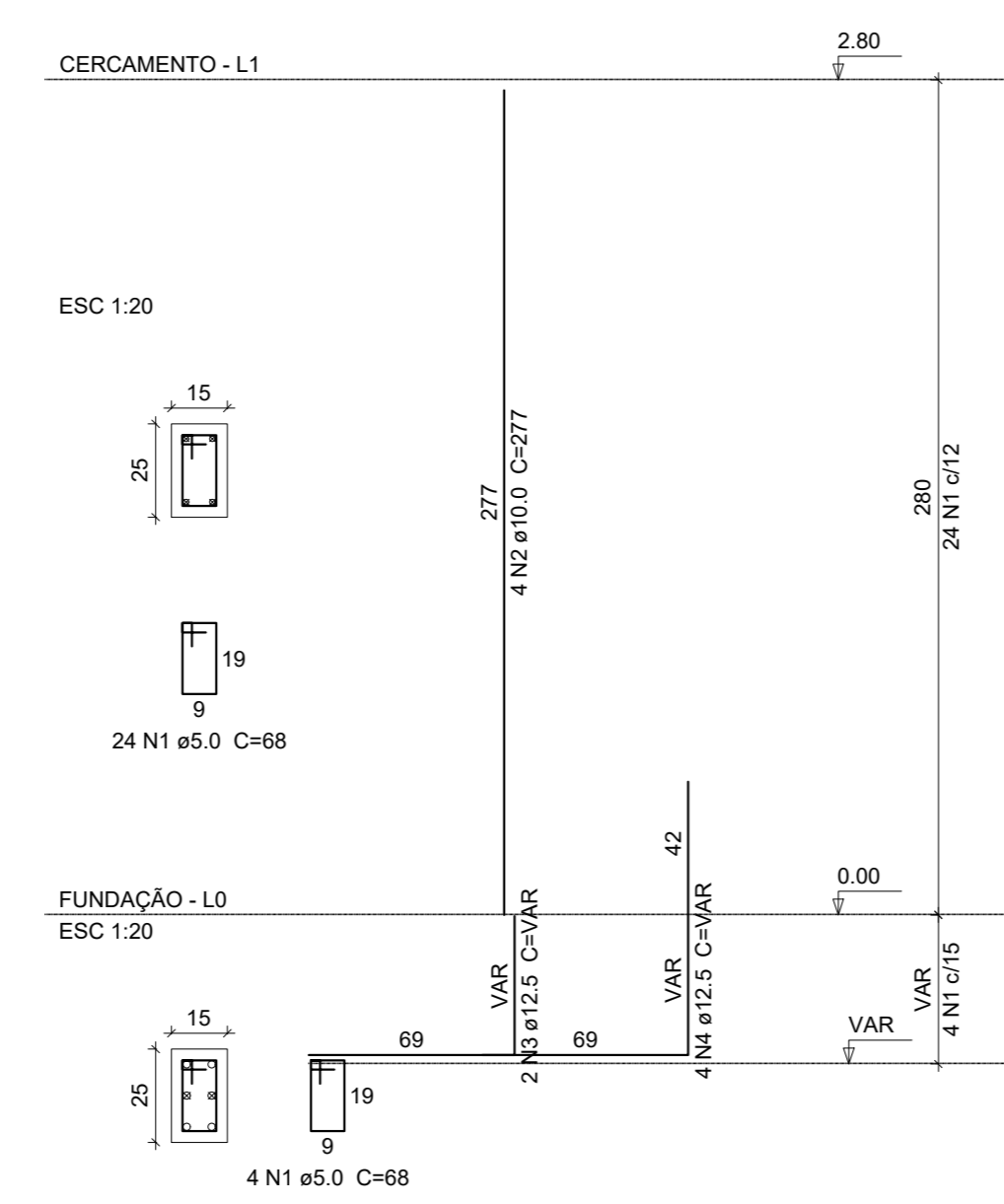
P7



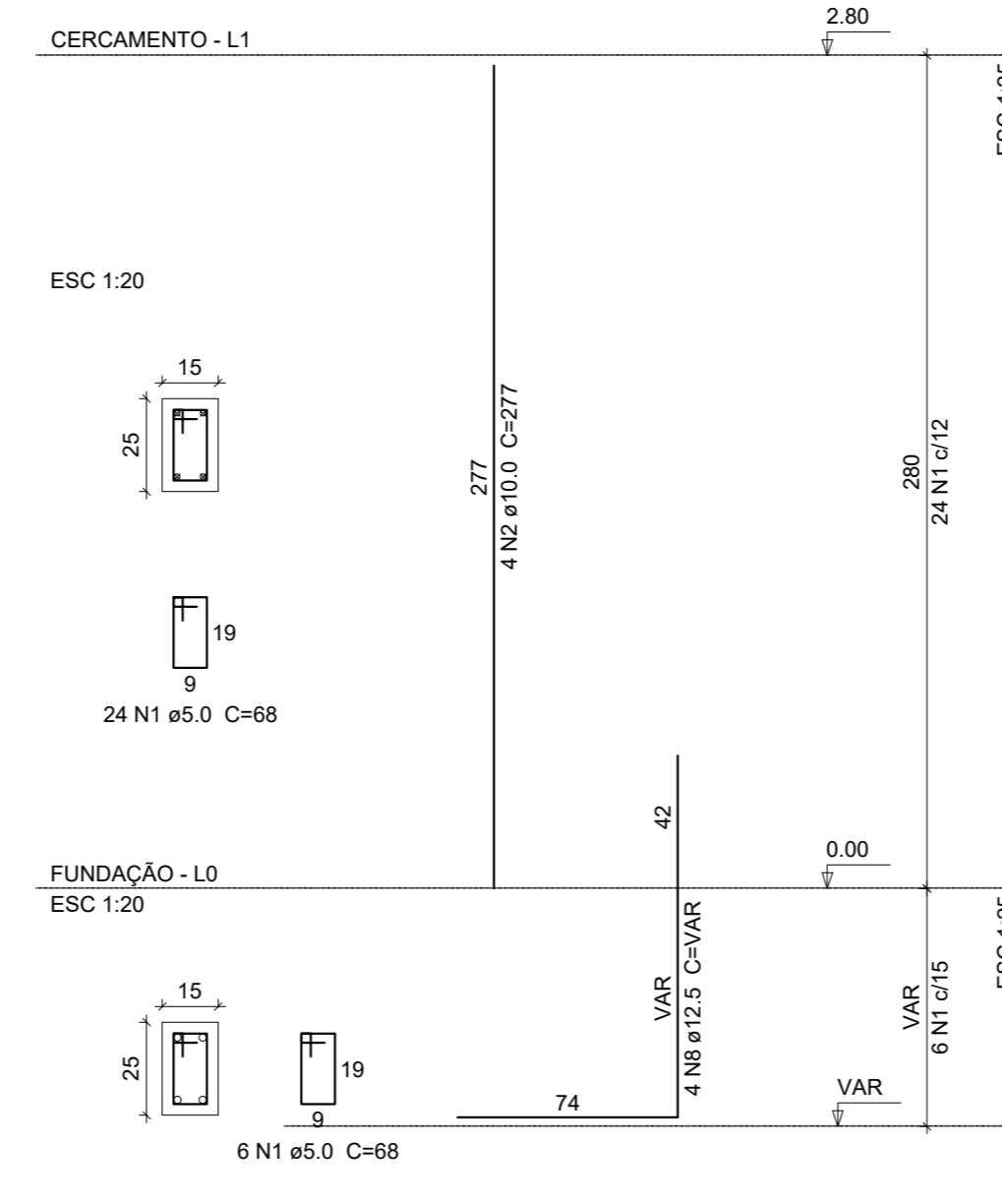
P11



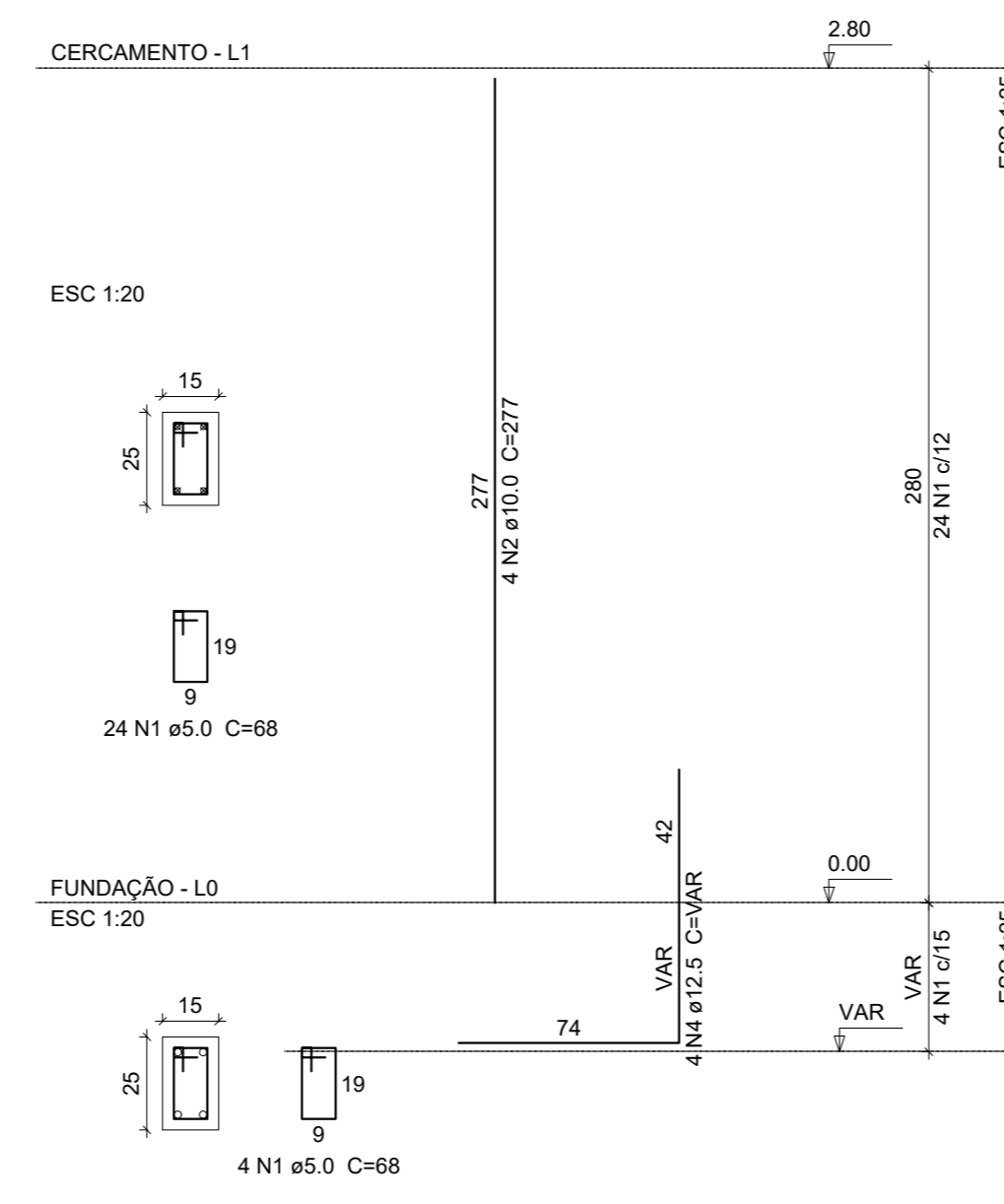
P15



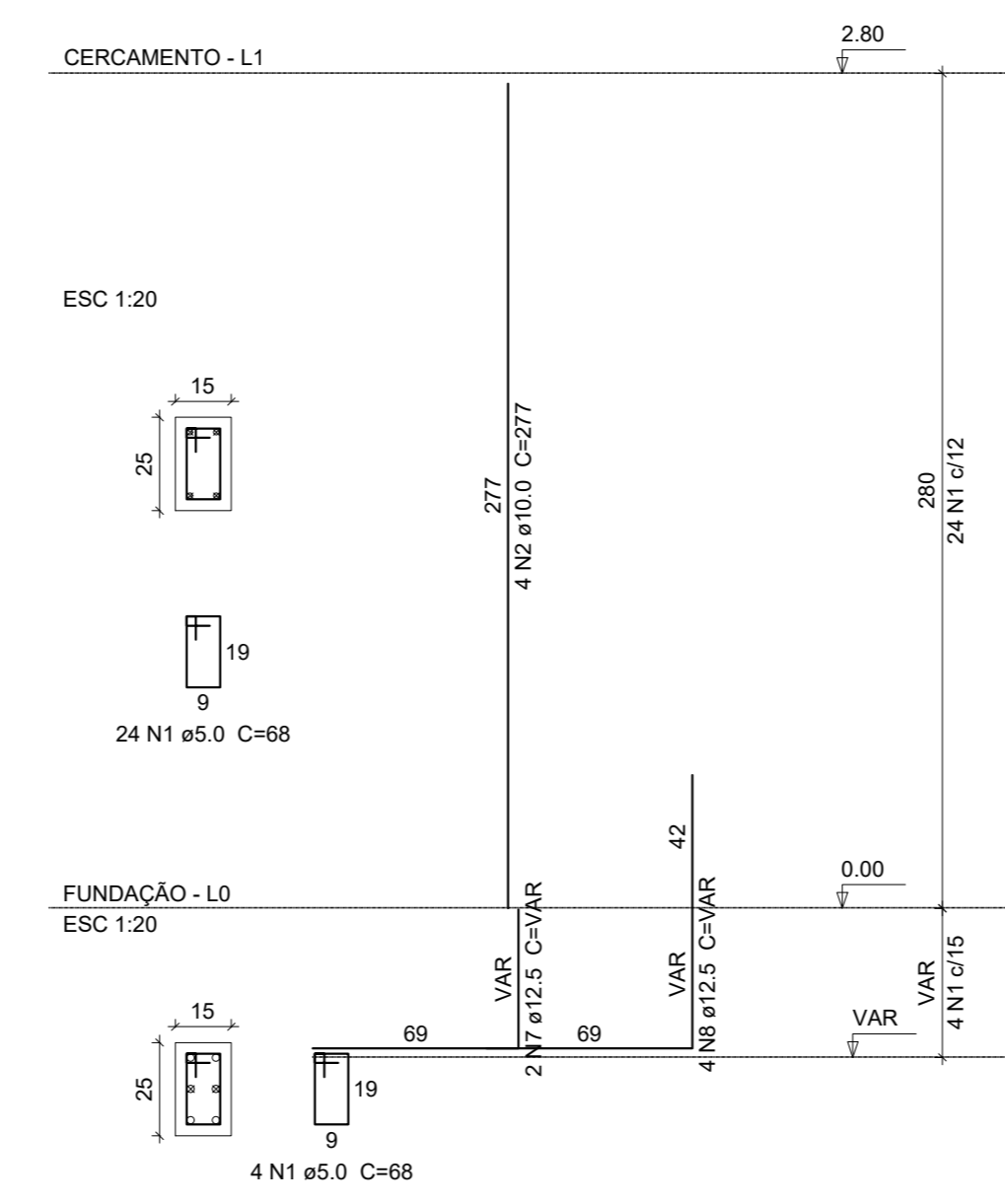
P4



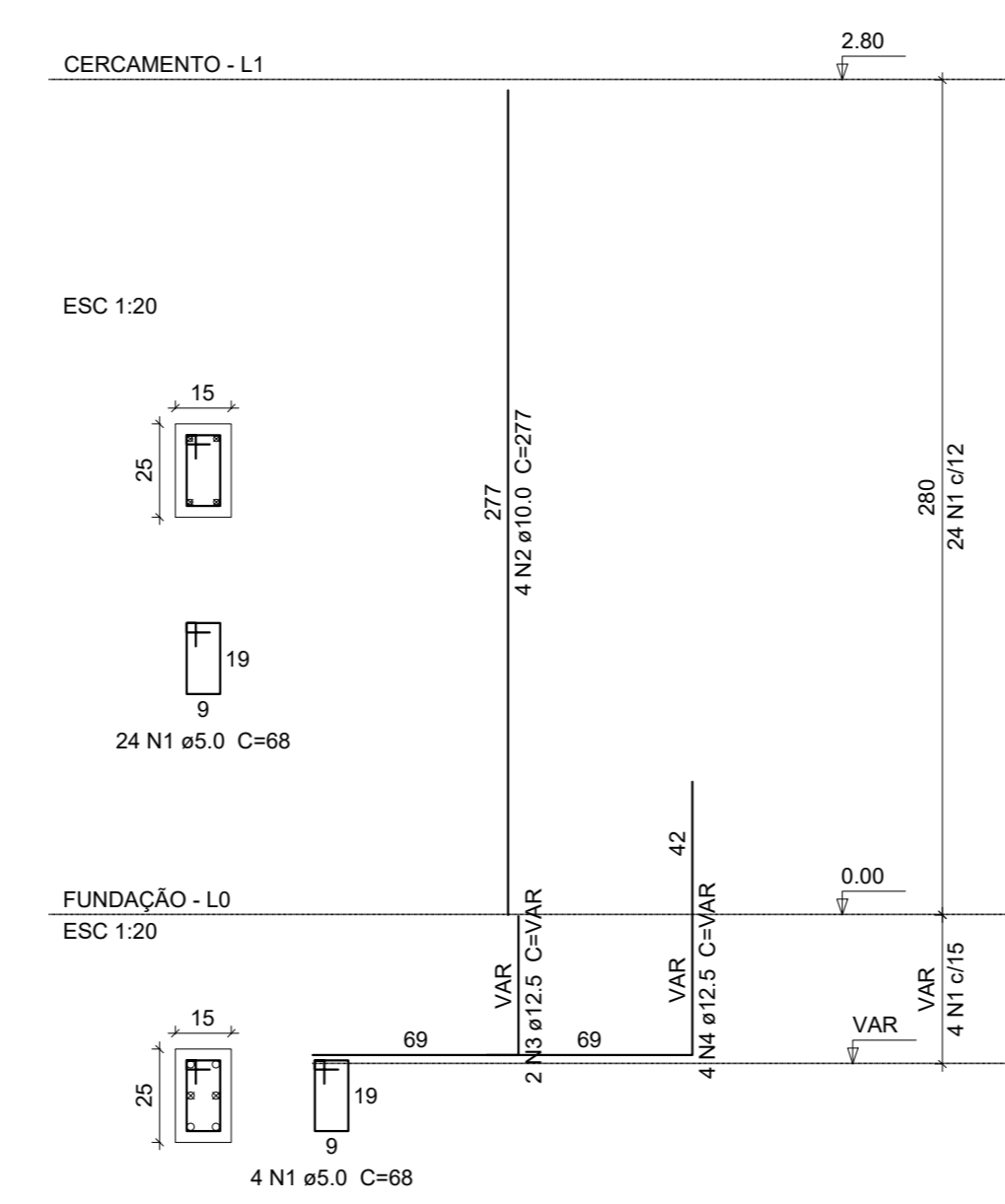
P8



P12



P16



Relação do aço

AÇO	N	DIAM	Q	UNIT	C.TOTAL
CA60	1	5,0	109	68	7412
CA50	3	12,5	2	VAR	3234
	4	12,5	4	VAR	VAR
	5	12,5	4	VAR	VAR
	6	12,5	4	VAR	VAR
	7	12,5	4	VAR	VAR
	8	12,5	4	VAR	VAR

Resumo do aço

AÇO	DIAM	C.TOTAL	PESO = 10 %
CA50	10,0	33,3	22,5
CA60	5,0	40,1	12,4
PESO TOTAL		73,4	12,6

Vol. de concreto total (C-30) = 0,51 m³  
Área de forma total = 10,8 m²

Relação do aço

AÇO	N	DIAM	Q	UNIT	C.TOTAL
CA60	1	5,0	112	68	7616
CA50	2	10,0	16	VAR	4432
	3	12,5	12	VAR	3204
	4	12,5	4	VAR	VAR

Resumo do aço

AÇO	DIAM	C.TOTAL	PESO = 10 %
CA50	10,0	44,4	30,1
CA60	5,0	78,2	12,9
PESO TOTAL		122,6	12,9

Vol. de concreto total (C-30) = 0,5 m³  
Área de forma total = 10,56 m²

Relação do aço

AÇO	N	DIAM	Q	UNIT	C.TOTAL
CA60	1	5,0	102	68	6936
CA50	2	10,0	8	VAR	2216
	3	12,5	4	VAR	VAR
	4	12,5	8	VAR	2216
	5	12,5	2	VAR	VAR
	6	12,5	4	VAR	VAR
	7	12,5	4	VAR	VAR
	8	12,5	8	VAR	VAR

Resumo do aço

AÇO	DIAM	C.TOTAL	PESO = 10 %
CA50	10,0	22,2	15
CA60	5,0	54,2	17,3
PESO TOTAL		76,4	11,8

Vol. de concreto total (C-30) = 0,5 m³  
Área de forma total = 10,56 m²

Relação do aço

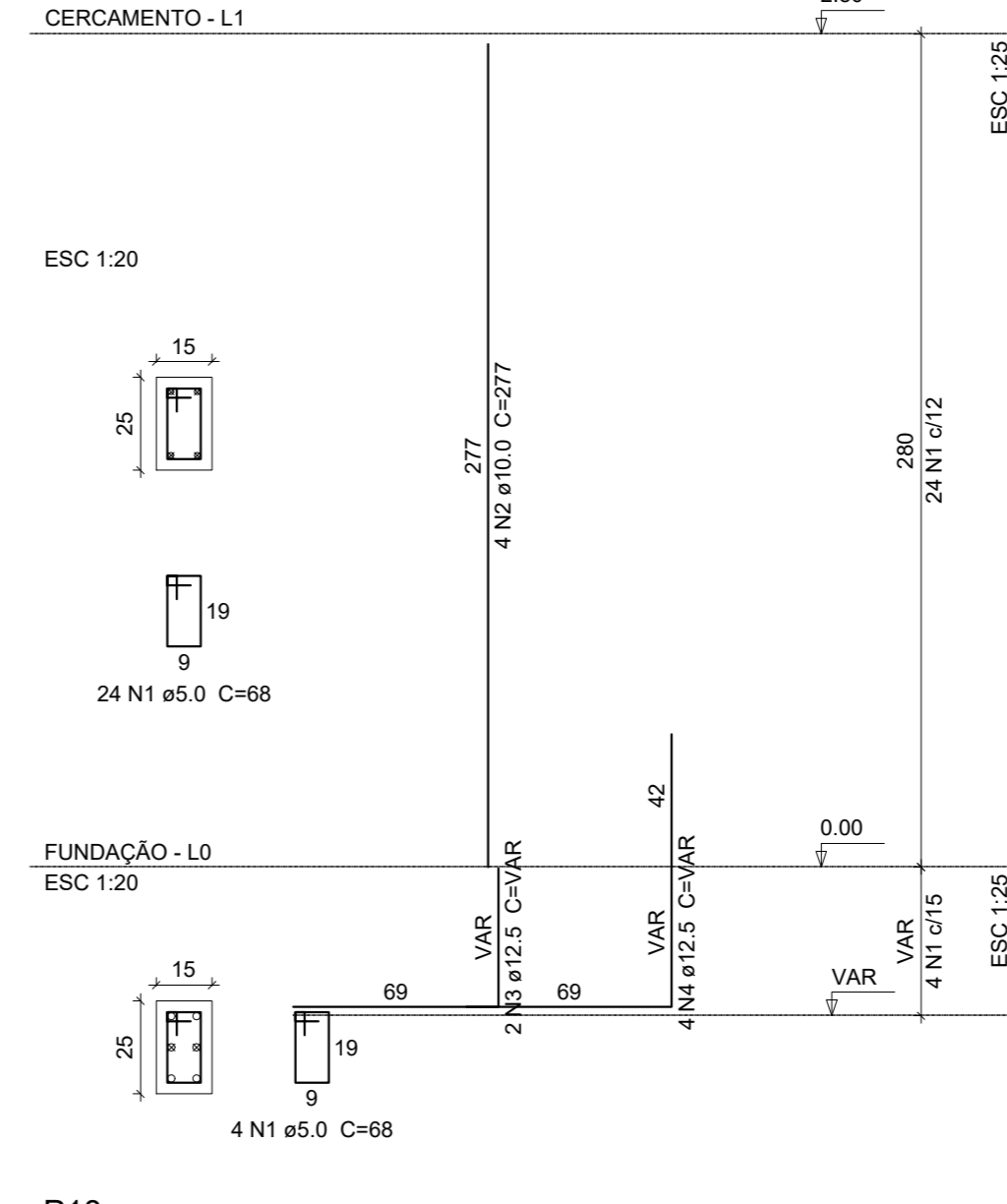
AÇO	N	DIAM	Q	UNIT	C.TOTAL
CA60	1	5,0	112	68	7616
CA50	2	10,0	16	VAR	4432
	3	12,5	8	VAR	VAR
	4	12,5	16	VAR	VAR

Resumo do aço

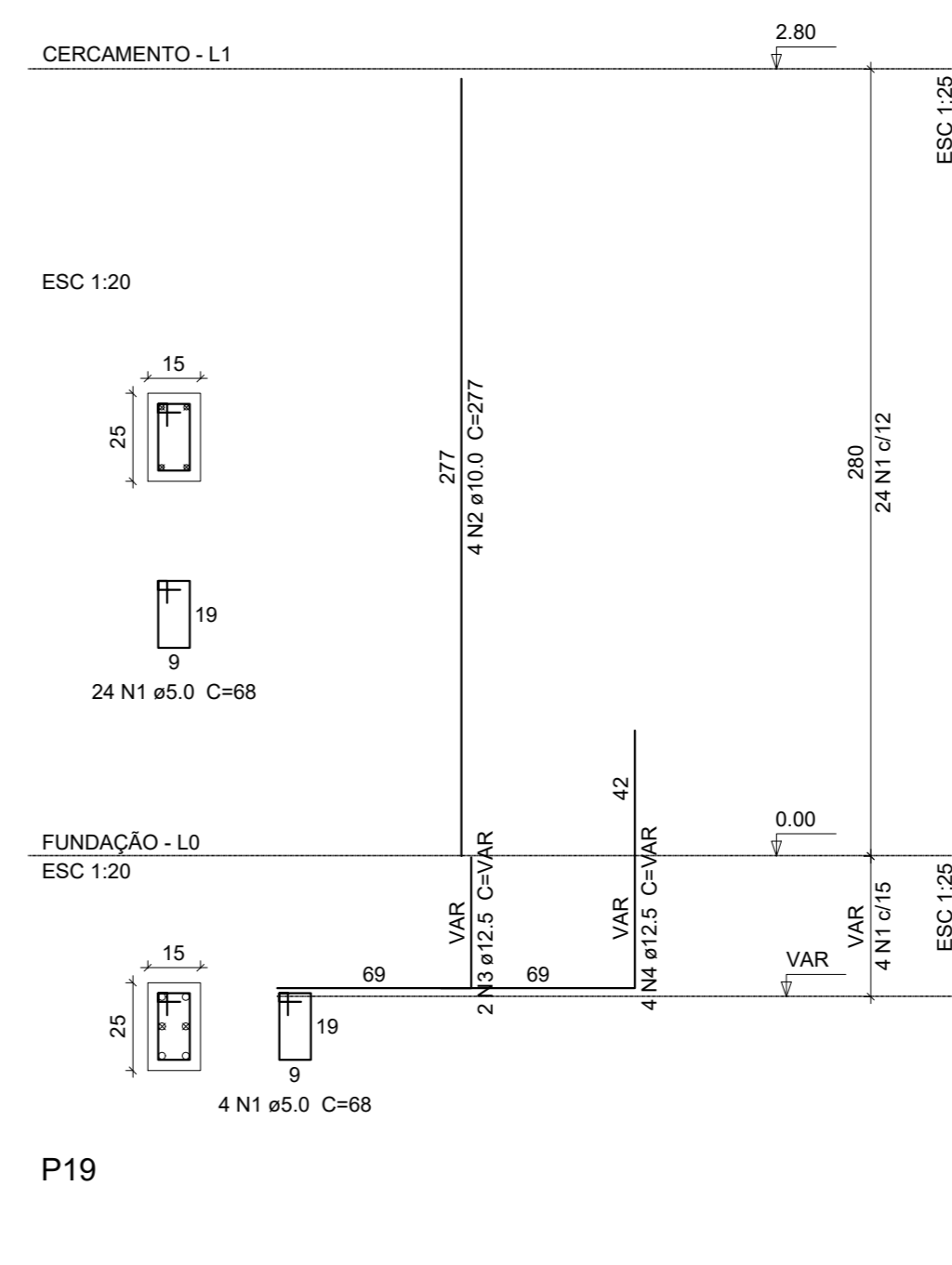
AÇO	DIAM	C.TOTAL	PESO = 10 %
CA50	10,0	44,4	30,1
CA60	5,0	36,4	12,4
PESO TOTAL		80,8	12,9

Vol. de concreto total (C-30) = 0,5 m³  
Área de forma total = 10,56 m²

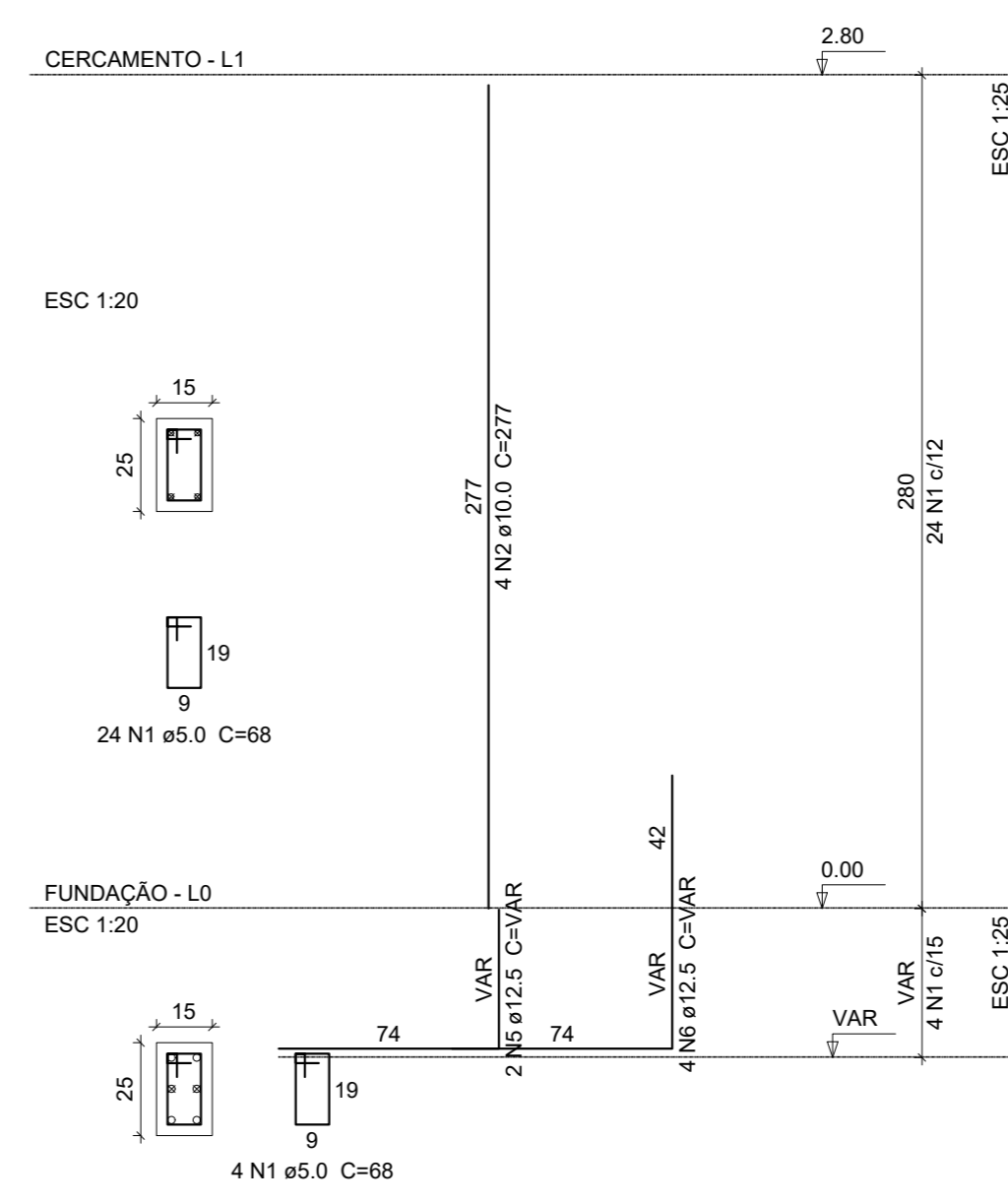
P17



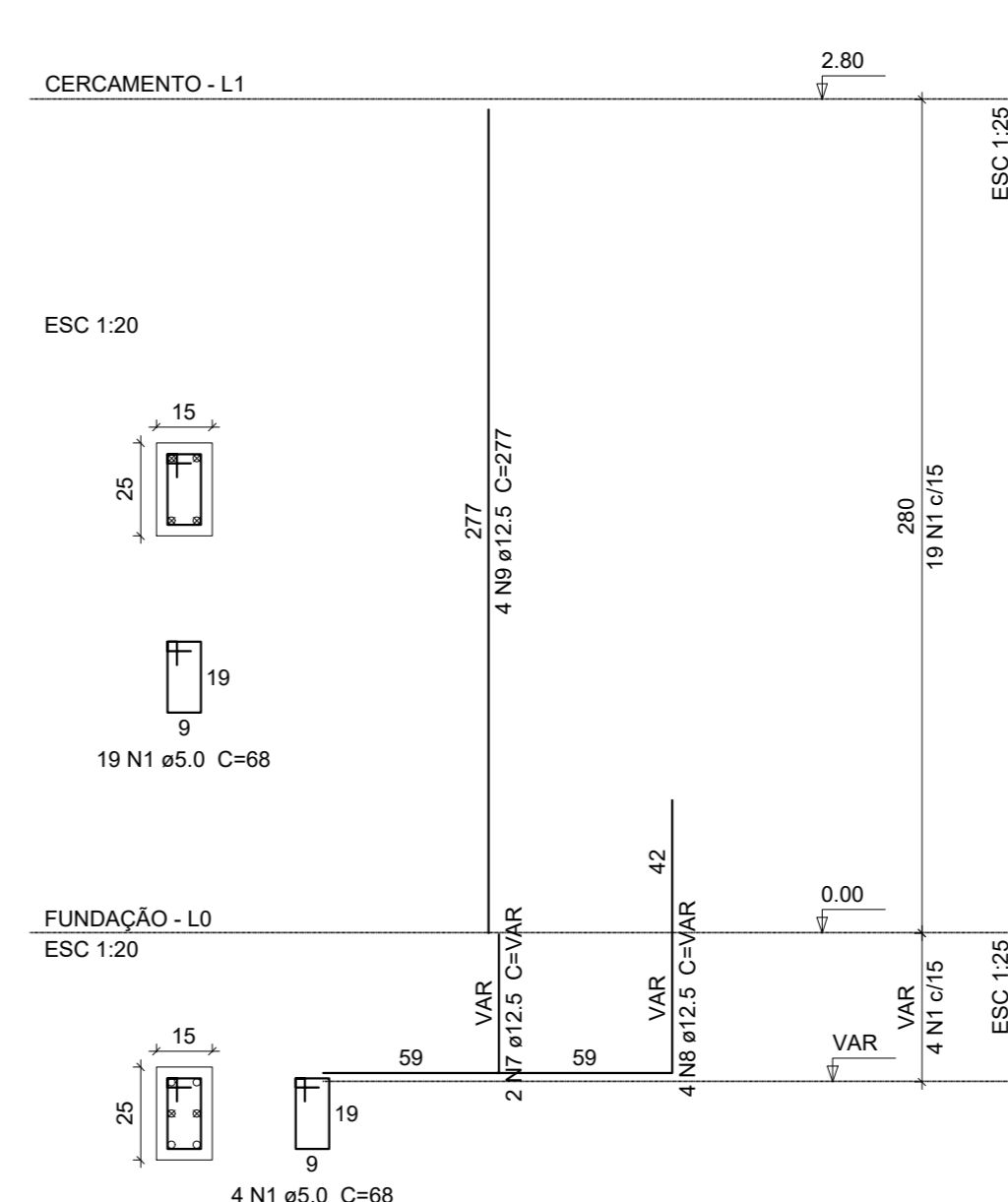
P18



P19



P20



Relação do aço

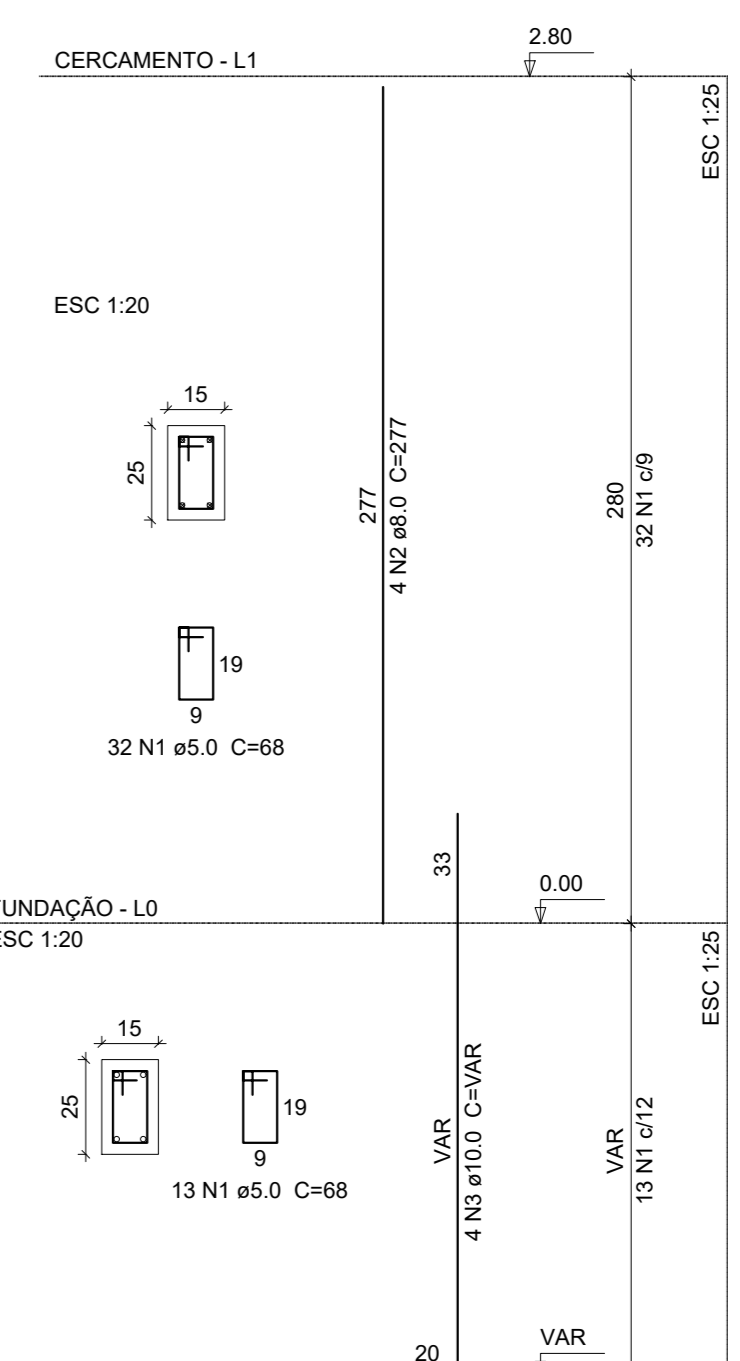
AÇO	N	DIAM	Q	UNIT	C.TOTAL
CA60	1	5,0	107	68	7276
CA50	2	10,0	12	VAR	3324
	3	12,5	4	VAR	VAR
	4	12,5	8	VAR	VAR
	5	12,5	2	VAR	VAR
	6	12,5	4	VAR	VAR
	7	12,5	2	VAR	VAR
	8	12,5	4	VAR	VAR
	9	12,5	4	VAR	1108

Resumo do aço

AÇO	DIAM	C.TOTAL	PESO = 10 %
CA50	10,0	33,3	22,5
CA60	5,0	45,1	12,6
PESO TOTAL		78,4	12,3

Vol. de concreto total (C-30) = 0,5 m³  
Área de forma total = 10,56 m²

P21=P22



Relação do aço

AÇO	N	DIAM	Q	UNIT	C.TOTAL
CA60	1	5,0	90	68	6120
CA50	2	8,0	8	VAR	2216
	3	10,0	8	VAR	VAR

Resumo do aço

AÇO	DIAM	C.TOTAL	PESO = 10 %
CA50	8,0	22,2	9,6
CA60	10,0	16,1	10,9
CA50	5,0	61,2	10,4
PESO TOTAL		99,5	10,4

Vol. de concreto total (C-30) = 0,32 m³  
Área de forma total = 6,88 m²

CENCI&FACCIO ENGENHARIA

Av. Monsenhor Scalabrini, nº 467 - Centro - Guaporé/RS (54) 99924-2524 | shalaine.cenci@gmail.com (54) 99632-7109 | thomas.faccio@hotmail.com

PROPRIETÁRIO: [assinatura] MUNICIPIO DE TRINDADE DO SUL CNPJ: 92.399.211/0001-67 RESPONSÁVEL TÉCNICO: [assinatura] THOMAS D. FACCIO CREA RS223810

ENDEREÇO: RUA AROEIRA CONTEUDO: ESTRUTURAL - PILARES EXTENSÃO: 91,31 m ESCALAS: INDICADAS DATA: NOVEMBRO/2020 PRANCHAS: 06/06